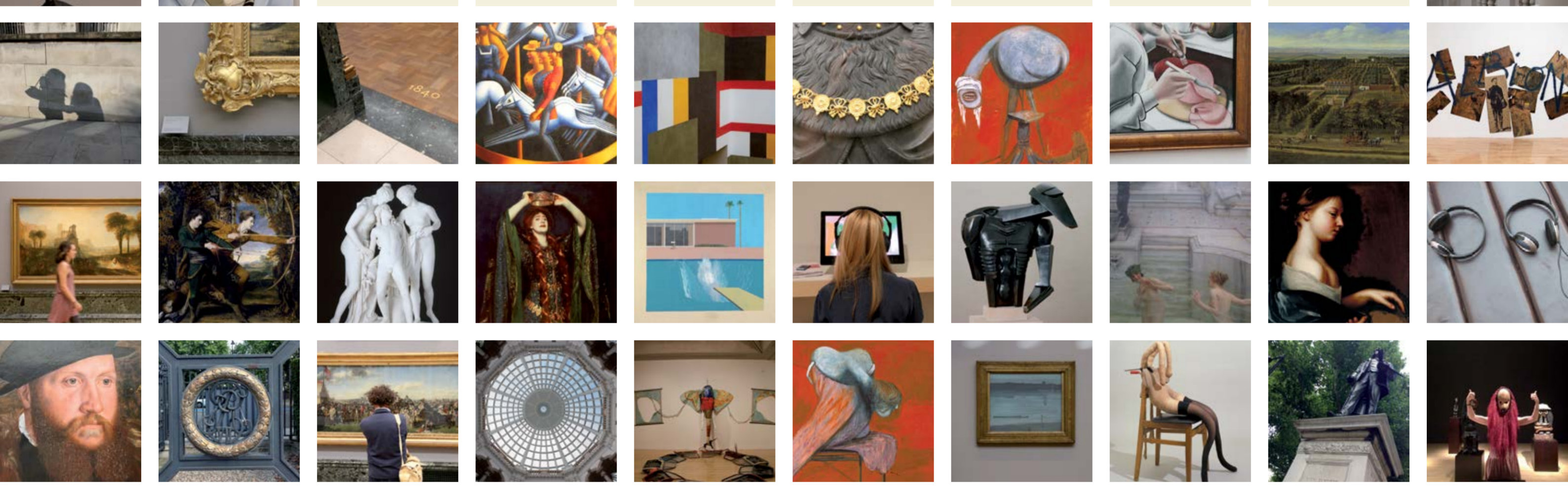


M E E T T H E

N E W

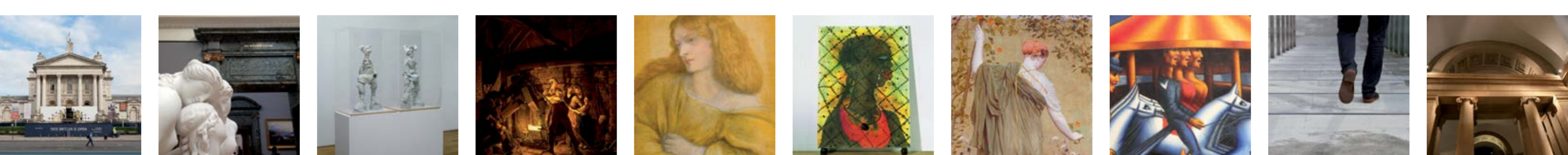
T A T E

B R I T A I N



1910 Meet 500 years of British art Free from 19 November #TateBritain

BRITAIN TATE



TATE.ORG.UK
PIMLICO
TATEGALLERY
@TATE

BP Displays Supported by BP 

Row 1

Charles Bennett Lawes-Wittewronge *Death of Dirce* 1906

Mary Beale *Portrait of a Young Girl* c.1681, Sketch of the Artist's Son, Bartholomew Beale, Facing Left c. 1660

Mary Beale *Sketch of the Artist's Son, Bartholomew Beale, Facing Left* c. 1660

Richard Westmacott *Jupiter and Ganymede* 1811

Architectural Feature

John Singer Sargent, *Carnation, Lily, Lily, Rose* 1885–6

Detail from 1540 Gallery

Thomas Daniell *Idgah at Amroha* 1810

Dante Gabriel Rossetti *The Girlhood of Mary Virgin* 1848–9

Frederic, Lord Leighton *An Athlete Wrestling with a Python* 1877

Row 2

Sir John Everett Millais *The Boyhood of Raleigh* 1870

1914 & 1915 Gallery, Christopher Richard Wynne Nevinson *Bursting Shell* 1915, David Bomberg *The Mud Bath* 1914 © Tate, Sir Jacob Epstein *Torso in Metal from 'The Rock Drill* 1913–14 © The estate of Sir Jacob Epstein

Sir Peter Blake *Portrait of David Hockney in a Hollywood Spanish Interior* 1965 © Peter Blake 2002. All rights reserved, DACS

Alfred Wallis *St Ives* c.1928

John William Waterhouse *The Lady of Shalott* 1888

David Tremlett *Drawing for Free Thinking* 2011

William Blake *Dante and Virgil Penetrating the Forest From Illustrations to Dante's 'Divine Comedy'* 1824–7

Henry Moore *Recumbent Figure* 1938 © The Henry Moore Foundation

Patrick Heron *Azalea Garden: May 1956* 1956 © The Estate of Patrick Heron. All rights reserved, DACS 2013

Unknown maker *King James II* c.1685–1688

Row 3

Detail from gallery

British School 17th century *The Cholmondeley Ladies* c.1600–10

David Bomberg *The Mud Bath* 1914 © Tate

Detail from gallery

Jake Chapman Dinos Chapman *The Chapman Family Collection* 2002 © Jake and Dinos Chapman

Barbara Hepworth *Three Forms* © Bowness, Hepworth Estate

Sir Nathaniel Bacon *Cookmaid with Still Life of Vegetables and Fruit* c.1620–5

Tony Cragg *Stack* 1975 © Tony Cragg

Christopher Richard Wynne Nevinson *The Arrival* c.1913 © Tate

John Simpson, *Head of a Man (Ira Frederick Aldridge)* exhibited 1827

Row 4

Edward Burra *The Snack Bar* 1930 © The estate of Edward Burra, courtesy Lefevre Fine Art, London

Architectural feature from the Rotunda © Tate Photography

Architectural feature © Tate Photography

Row 5

Architectural feature © Tate Photography

William Powell Frith *The Derby Day* 1856–8

William Hogarth *The Painter and his Pug* 1745

John Constable *Salisbury Cathedral from the Meadows* 1829

The Duveens

Sir Thomas Brock *Sir Henry Tate* exhibited 1898

Detail of a frame

Row 6

Emily Mary Osborn *Nameless and Friendless. "The rich man's wealth is his strong city, etc." - Proverbs, x, 15* 1857

Mabel Nicholson *Family Group* c.1911

John Frederick Lewis, Study for *The Courtyard of the Coptic Patriarch's House in Cairo* c.1864

Sir Anthony Caro *Early One Morning* 1962 © Anthony Caro/Barford Sculptures Ltd

Johan Zoffany *Colonel Mordaunt's Cock Match* c.1784–6

Paul Graham *Untitled #38, Woman on Sidewalk, New York, 2002* 2002 © Paul Graham, courtesy Anthony Reynolds Gallery London/ Pace/ MacGill

Row 7

Sir Alfred Gilbert Model for *Eros* on the Shaftesbury Memorial, Piccadilly Circus 1891

Lucian Freud *Girl with a Kitten* 1947 © The Lucian Freud Archive / Bridgeman Art Library

Architectural Feature from the Rotunda © Tate Photography

Row 8

Architectural feature

Detail of a frame

Detail from gallery

Mark Gertler, detail from *Merry-Go-Round* 1916

David Tremlett *Drawing for Free Thinking* 2011

Hubert Le Sueur, detail from *Charles I* c.1637

Francis Bacon, detail from *Three Studies for Figures at the Base of a Crucifixion* c.1944 © Tate

Edward Burra, detail from *The Snack Bar* 1930 © The estate of Edward Burra, courtesy Lefevre Fine Art, London

Jan Siberechts *View of a House and its Estate in Belsize, Middlesex* 1696

Mark Wallinger *Where There's Muck* 1985 © Mark Wallinger, courtesy Anthony Reynolds Gallery, London

Row 9

JMW Turner *Caligula's Palace and Bridge* exhibited 1831

Sir Joshua Reynolds *Colonel Acland and Lord Sydney: The Archers* 1769

John Gibson Hylas *Surprised by the Naiades* 1827, exhibited 1837

John Singer Sargent *Ellen Terry as Lady Macbeth* 1889

David Hockney *A Bigger Splash* 1967 © David Hockney

In-gallery Digital Space

Sir Jacob Epstein *Torso in Metal from 'The Rock Drill* 1913–14 © The estate of Sir Jacob Epstein

Sir Lawrence Alma-Tadema *A Favourite Custom* 1909

Mary Beale *Portrait of a Young Girl* c.1681

In-gallery digital space © Tate Photography

Row 10

John Bettes *A Man in a Black Cap* 1545

Architectural feature

William Powell Frith *The Derby Day* 1856–8

Architectural feature © Tate Photography

Bill Woodrow *Elephant* 1984 © Bill Woodrow

Francis Bacon, detail from *Three Studies for Figures at the Base of a Crucifixion* c.1944 © Tate

James Abbott McNeill Whistler *Nocturne: Blue and Silver – Chelsea* 1871

Sarah Lucas *Pauline Bunny* 1997 © Sarah Lucas, courtesy Sadie Coles HQ London

Sir Thomas Brock *Sir John Everett Millais* 1904

Jake Chapman, Dinos Chapman *The Chapman Family Collection* 2002 © Jake and Dinos Chapman, courtesy White Cube London

Row 11

William Holman Hunt, detail from *Our English Coasts* 1852 ('Strayed Sheep') 1852

Detail from 1910 Gallery

1730 Gallery

John Martin *The Great Day of His Wrath* 1851–3

Row 12

Architectural Feature

John Gibson, detail from *Hylas Surprised by the Naiades* 1827, exhibited 1837

Rebecca Warren *Come Helga* 2006 © Rebecca Warren, courtesy Maureen Paley

Joseph Wright of Derby *An Iron Forge* 1772

Dante Gabriel Rossetti *Woman in Yellow* 1863

Chris Ofili *No Woman, No Cry* 1998 © Chris Ofili, courtesy Victoria Miro Gallery, London

Albert Moore *A Garden* 1869

Mark Gertler, detail from *Merry-Go-Round* 1916

Architectural feature, Manton Entrance steps

Architectural feature, The Duveens

All images are details

To view the full images, search the artwork title at tate.org.uk/art