



Andy Warhol
Eggs, (detail) 1982. The Andy Warhol Museum,
Pittsburgh; Founding Collection, Contribution
The Andy Warhol Foundation for the Visual Arts,
Inc. © The Andy Warhol Foundation for the Visual
Arts, Inc./ARS, NY and DACS, London 2011

Tate St Ives
Winter

8 October 2011–3 January 2012

01

**The Indiscipline
of Painting**

International abstraction
from the 1960s to now

02

**Barbara Hepworth
Museum and Sculpture
Garden**

New Perspectives on
a Living Legacy

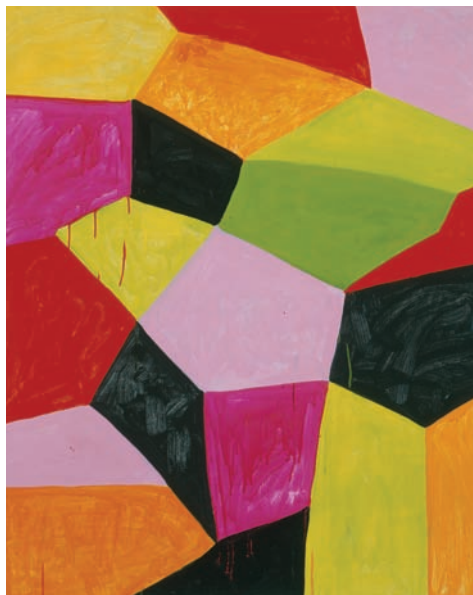
03

Ben Nicholson
St Ives Multimedia Trail

TATE
ST IVES

The Indiscipline of Painting

International abstraction from the 1960s to now



The Indiscipline of Painting is an international group exhibition featuring paintings by Andy Warhol, Frank Stella and Bridget Riley alongside younger artists including Turner Prize winner Tomma Abts, Katharina Grosse and Alex Hubbard. Selected by British painter Daniel Sturgis it includes works by forty-nine British, American and European artists, many of which have not been seen in the UK before.

The exhibition examines the post-war history and legacy of modernist abstract painting, considering how the languages of abstraction have remained urgent, relevant and critical as they have been revisited and reinvented by subsequent generations of artists over the last fifty years. Through new

commissions, loans and works from the Tate Collection, it demonstrates the way in which the history and legacy of abstract painting continues to inspire artists today.

The contemporary position of abstract painting is problematic. It is often linked to a modernist moment that has long since passed, and an ideology which led the medium to stagnate, reflecting upon its own processes of composition and ideas of historical progression. This exhibition challenges such assumptions and reveals how painting's modernist histories, languages and positions have continued to provoke ongoing dialogues with contemporary practitioners, even as painting's decline and death has been routinely and erroneously declared.

The Indiscipline of Painting is a collaborative project between Tate St Ives and Mead Gallery, Warwick Arts Centre. The exhibition travels to the Mead Gallery where it opens on the 14 January 2012, running until 10 March 2012

As part of *The Indiscipline of Painting*, Newlyn Art Gallery has commissioned an exhibition of new work by John M. Armleder. *John M. Armleder* is at Newlyn Art Gallery 8 October 2011 – 3 January 2012.

Mary Heilmann
Primalon Ballroom 2002
Kenny Shachter and Ilona Rich
© Mary Heilmann



Supported by:
Tate Members and Tate St Ives Members



The Henry Moore
Foundation

ifa

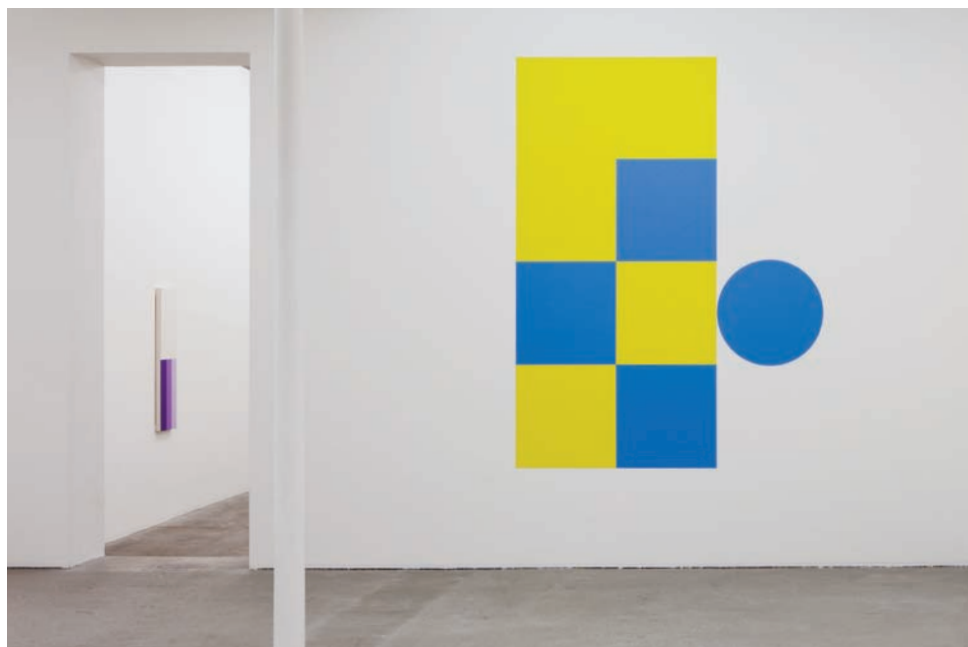


Institut für Auslands-
beziehungen e. V.



Above: Frank Stella
Hyena Stomp 1962
Tate
© ARS, NY and DACS,
London 2011

Below: Francis Baudevin
The Only Truth 2010
Courtesy Francis Baudevin
and Galerie Mark Müller,
Zürich 2010



Barbara Hepworth Museum and Sculpture Garden

New Perspectives on a Living Legacy

Alongside *The Indiscipline of Painting*, which looks at the history and legacy of abstract painting, there is a special focus this season on the Barbara Hepworth Museum and Sculpture Garden, exploring one of the twentieth centuries greatest abstract sculptors.

Hepworth moved to St Ives, along with her husband Ben Nicholson and young family, at the outbreak of the Second World War. "Finding Trewyn was a sort of magic", Barbara Hepworth wrote of her St Ives studio, now the Hepworth Museum, where she lived and worked from 1949 until her death in 1975. Following her wish to establish her home and studio as a museum for her work, Trewyn Studio,


and much of the artist's work remaining there, was given to the nation and placed in Tate's care in 1980. It displays sculptures in bronze, stone and wood, both in the house and integrated into the subtropical foliage of the garden, along with paintings, drawings and archival material preserved in the artist's workshops.

Following the recent opening of The Hepworth Wakefield, there has been a renewed interest in the artist and her work. This new purpose built gallery, designed by David Chipperfield in the town where she was born, is now home to a collection of plasters, prototypes, tools and ephemera, many of which have been relocated to the museum from St Ives.



Barbara Hepworth *Two Forms (Divided Circle)* 1969 © Bowness, Hepworth Estate Photo: © Tate Marcus Leith & Andrew Dunkley

Barbara Hepworth Talk Series

 A tour guide system for visitors who require hearing support is available at all talks and events listed.

Event tickets can be booked online at www.tate.org.uk/stives, email stivesticketing@tate.org.uk or call 01736 796226.



View of Barbara Hepworth's Studio
© Bowness, Hepworth Estate
Photo: © Tate
Marcus Leith & Andrew Dunkley

This season Tate St Ives presents a diverse programme of talks engaging with different aspects of Hepworth's life and work, as well as the challenges and issues around the conservation and display of her studio, house and garden in St Ives, and the opening of a new museum in Wakefield. This programme offers new perspectives by artists, conservators, curators and historians who have a special connection to the artist and her legacy.

The Hepworth Wakefield Simon Wallis, Director

Tate St Ives

Sun 6 Nov, 15.00

£5 / conc. £3, advance booking recommended

Simon Wallis shares the journey which led up to the establishment of the new gallery, the programme ethos and the connections and synergies with the Barbara Hepworth Museum and Sculpture Garden.

Piercing the Spirit Storehouse Linder Sterling, Artist

Barbara Hepworth Museum and Sculpture Garden

Sun 27 Nov, 15.00

£6.50 / conc. £4, advance booking recommended, includes admission to the Barbara Hepworth Museum and Sculpture Garden

Since the mid seventies Linder Sterling has explored the terrain of socially and culturally reinforced norms and expectations of gender, identity, sexual commodification and represented desire. Her early career was forged in the punk and post-punk scenes of Manchester in the 1970's and her position has consistently embraced radical feminist perspectives, rethinking the cultural treatment of the female body in particular, through collages, photo montages and performances she has made since this time.

Conserving Hepworth Tessa Jackson, Conservator

Tate St Ives

Sun 4 Dec, 15.00

£5 / conc. £3, advance booking recommended

Tessa Jackson, specialist in the conservation of sculpture and objects, introduces her recent work on Hepworth offering new perspectives on technique and working processes.

A £2 discount on admission to the Barbara Hepworth Museum and Sculpture Garden is available for visitors who book both the Tessa Jackson and Simon Wallis talks. Please show your talks tickets at the Admissions desk.

Ben Nicholson

St Ives Multimedia Trail



Ben Nicholson (1894-1982) was one of the most radical British artists of the twentieth century and has long been recognised as a leading exponent of the modern movement in Britain. Most famous for his abstract paintings and reliefs of the 1930s, Nicholson began his career as a figurative painter and developed a deep and enduring relationship with the English landscape. St Ives was seminal to Nicholson's art and his home for nineteen years where he and his wife Barbara Hepworth became key figures in the development of the artists' colony in the town.

To build on the context of the unique location of the gallery, Tate St Ives is offering a multimedia trail to take you on a tour around the town, connecting places and spaces to Nicholson, his work and his life. This resource provides a wealth of material including archive photographs, letters and images of artwork by the artist and some of his contemporaries in St Ives; offering the opportunity to experience St Ives from the

artists' perspective, and uncover more of the heritage of St Ives as an artists' colony.

You can download the trail as a video podcast free of charge from Tate Online (<http://www.tate.org.uk/stives>) or through iTunes before you visit. You can also hire an iPod touch and take the Multimedia tour when you arrive at the Gallery (limited availability). iPod touches are £3 to hire or free for those with Admission tickets to Tate St Ives or the Barbara Hepworth Museum and Sculpture Garden (tickets must be shown upon hiring). Please note a security deposit will be required.

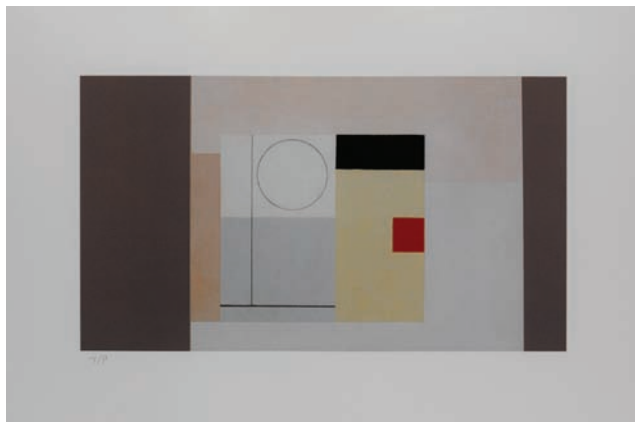
The trail was developed by Tate Media and Tate St Ives and is the first time a guide has been developed for use outside of the gallery spaces. It is part of Tate's Bafta award-winning multimedia tour programme, which focuses on how new technology can be used to enhance gallery visits.

Above: Ben Nicholson
1943 - 45 (St Ives, Cornwall)
Tate © Angela Verren Taunt
All Rights Reserved, DACS 2011

Below: Ben Nicholson
St Ives from Trezion 1967
Tate © Angela Verren Taunt
All Rights Reserved, DACS 2011



Tate St Ives Limited Edition Prints



Left: Ben Nicholson
1945 (design for an act drop)
Lithograph. Editioned by
Paupers Press © Angela
Verren Taunt 2008
All rights reserved, DACS
Image size: 21 x 37 cm
Paper size: 35 x 50 cm
£300 unframed
Edition of 200

Below: Lily van der Stokker
Kissy 2010. Silkscreen print
29.5 x 21.9 cm
Edition of 100 + 10 artist proofs
£255 unframed



To celebrate its special exhibitions, Tate St Ives produces Limited Edition Prints. To date twenty four works have been made with featured artists such as Simon Starling, Dexter Dalwood, Peter Lanyon and Richard Long.

The latest print in this series is by Swiss artist Francis Baudevin, who has made a work to accompany his commission for the current exhibition, *The Indiscipline of Painting*, which replicates abstract motifs found in imagery extracted from visual design.

With prices starting from around £200, these (unframed) works of art are available for purchase at Tate St Ives or online. The net proceeds fund our exhibition and learning programme.

For more information call 01736 796226 or visit www.tate.org.uk/stives.

Events

Below: John M. Armleder
Installation view, *Scrambled and Poached* Simon Lee Gallery, London, 25 June - 29 August, 2008. Courtesy Galerie Andrea Caratsch, Zurich.

Special Events

Tate Talk at UCF:

Michael Craig-Martin

University College Falmouth,
Woodlane Lecture Theatre
Thur 6 Oct 18.00

Free, booking recommended
Tickets via UCF at
www.eventbrite.com

British conceptual artist Michael Craig-Martin discusses his work and his re-make of an important early work to coincide with *The Indiscipline of Painting* at Tate St Ives. Having studied at Yale University, he was Professor at Goldsmiths College until 2000 and has remained a powerful influence on emergent British artists. His best know works include *An Oak Tree* 1973; large scale black and white wall drawings and lately his intensely coloured paintings. Throughout his career, through work in many different media, he has explored the expressive potential of commonplace objects and images.

In association with
University College Falmouth



Curator's Talk

Newlyn Art Gallery
Sat 8 Oct, 12.30

 BSL Interpreted

Free, booking essential via
Newlyn Art Gallery
on 01736 363715

Exhibition curator and artist Daniel Sturgis will introduce this collaborative exhibition project with Tate St Ives and lead a walk and talk around the Newlyn installation by artist John M. Armleder. Please note a courtesy shuttle bus will run between Tate St Ives and Newlyn Art Gallery on Sat 8 Oct, dep. St Ives 11.30 and 14.30, dep. Newlyn 14.00 and 16.00

The Cornwall Workshop

Kestle Barton, Manaccan,
Helston, 15-21 Oct 2011

For information and
application details visit
www.thecornwallworkshop.com

The Cornwall Workshop is a six-day residential workshop for artists, curators and critics that will address the concerns of practitioners based in Cornwall and the South West of England. Workshop leaders include American artist Mark Dion. Initiated and convened by independent curator Teresa Gleadowe in collaboration with Tate St Ives, The Cornwall Workshop will also host a series of public events. Visit the website above for more details. In association with Tate Research Centre: Creative Communities

Seminar: The Indiscipline of Painting - Abstraction Now

St Ives Arts Club, Westcott's Quay, St Ives


Sat 12 Nov, 10.00-15.30
£15 / conc. £10

In response to the themes of *The Indiscipline of Painting* this seminar will open up discussion as to how contemporary painters draw from the legacy of abstract painting, to create works that escape from being seen as synonymous with a modernist moment that has long since passed. Speakers include US based writer, critic and independent curator Terry Myers, New York based artist Mary Heilmann, German based artist Katharina Grosse, London based artist Peter Davies and exhibition selector and UK artist Daniel Sturgis. Convened by Tate Research Centre: Creative Communities, with support from CCW Graduate School, University of the Arts London.

Christmas at Tate

Tues 20 Dec, 16.00-21.30
Last admission to the galleries 21.00. Free

Celebrate the festive season at Tate St Ives. Enjoy art after hours with free admission to the exhibitions, a pay bar, late night gallery shopping and activities for all the family, the centrepiece being the St Ives Combined Chapels' Choir singing Christmas Carols including traditional Cornish.

 A tour guide system for visitors who require hearing support is available at all talks and events listed.

Events take place at Tate St Ives unless otherwise stated.

Event tickets can be booked online at www.tate.org.uk/stives, email stivesticketing@tate.org.uk or call 01736 796226.

Aged 15–25?

Tate St Ives hosts events and activities specifically for 15-25 year olds led by a group of young adults of the same age. Their interest is in seeing things through a different frame. If you'd like to get involved or find out more about future events visit www.tate.org.uk/youngtate.



Look Groups

Look Groups meet regularly in different venues across Cornwall to talk about art, artists and ideas in an informal and enjoyable way. The format is similar to a book group and no knowledge of art is required. If you would like to find out about a Look Group near you visit www.tate.org.uk/stives and click on Community Groups.

Late at Tate St Ives

On the last Friday of the month (Oct and Nov only) Free entry, galleries & shop open 18.00-21.00, food and pay bar in the café till 22.00 (last orders 21.30). Selected special events as listed.

Desert Island Pics

18.00–21.00, throughout the evening. Free Gallery staff, artists and curators share their stories and connections with works in the exhibitions.

Tate Film: Exploring the Abstract

Fri 28 Oct
18.00–21.00
Free, no booking necessary
Tate St Ives presents artist film and video in response to the theme of abstraction. See online for more details.

Special Event: FIELDCLUB

Fri 25 Nov
18.00–21.00
Free, no booking necessary
Following on from their involvement in The Cornwall Workshop, join FIELDCLUB, an artistic collective that investigates sustainable living, as they explore *Neo-Agrosophy*, a fusion of agriculture and contemporary philosophy.


Talks



Free Gallery Talks

Tues-Sat (Mondays also in October), 11.30 and 14.30 at Tate St Ives, 13.00 at Barbara Hepworth Museum
 BSL interpreted at 13.00 and 14.30 on 5 Nov and 3 Dec
Free with admission
Join a member of the gallery team for an informal introduction at Tate St Ives or the Barbara Hepworth Museum and Sculpture Garden.

Talking Painting

Sat 26 Nov, 11.00–13.00
 Designed for visitors who are blind and partially sighted
Free, advance booking essential
Share new perspectives on work in the current displays through audio description, discussion and practical art activities. No previous art experience necessary.

Tea & Tote

18 Oct, 30 Nov
13.30–15.30
Free event, advance booking essential
A regular event for seniors exploring the displays with artists, curators and historians.

Events

Take part in lively discussion, no knowledge of art required. Refreshments provided.

Members

M Exclusive events for Tate St Ives Members

Tate St Ives Members' Exhibition Preview

*Fri 7 Oct, 19.00-22.00
Invitation only*

Be the first to enjoy the Winter season at Tate St Ives. Pay bar in the café. **M**



Tate St Ives Members' Annual Social

*Fri 11 Nov, 18.00-21.00
Bring your friends. Free, advance booking essential*
Taking over from the Annual General Meeting, this event will be introduced by Mark Osterfield, Executive Director and Martin Clark, Artistic Director. Simon Wilson, Tate Members Council, will deliver a short talk on acquisitions made with Tate Members funding, followed by drinks, canapés and music in the café. Martin Clark will then lead a tour of the current exhibition. **M**

Families

Tate Families is an informal programme for children and adults to enjoy together. For more information visit www.tate.org.uk/families.

Tate Trails and Resources

From 50p, pick up in the gallery
Designed to have fun looking at artworks and the building, trails are available daily with additional family resources on loan throughout Cornish school holidays.

Hepworth Family Activity Trail

£2 (includes sketchbook and simple art materials)

Designed for adults and younger children to have fun together exploring this magical environment that was the artist's home and studio, including the garden she created for her sculpture.



Super Sundays

*16 Oct, 13 Nov, 11 Dec
11.00-16.00*

Free, no booking required, just drop in anytime throughout the day
A regular programme of hands-on creative activities for families to engage, challenge and inspire. Designed for children and adults to enjoy together.




Hands in Art

23 Nov, 10.00-13.00

Free, no booking required
A regular programme of creative play activities for families with children aged 0-5 years. Refreshments provided. *In association with St Ives Children's Centre.*

Walkabout Talkabout

*Half term Sat 22-Sat 29 Oct
Christmas Tue 27-Sat 31 Dec
Tues-Sun (Mondays also in October), 11.00 and 15.00 at Tate St Ives, 12.30 at Barbara Hepworth Museum and Sculpture Garden. Free with Admission*
Join a member of the Learning Team for an extra special journey into the exhibition. Open to families of all shapes and sizes!

 A tour guide system for visitors who require hearing support is available at all talks and events listed.

Events take place at Tate St Ives unless otherwise stated.

Event tickets can be booked online at www.tate.org.uk/stives, email stivesticketing@tate.org.uk or call 01736 796226.

Family Drop In

*Half term Sat 22 - Sat 29 Oct
Christmas Fri 16 Dec - Mon 2 Jan, Tues-Sun, 10.00-16.00 (Mondays also in October and from 12.30 only on Mon 2 Jan)*
Free with Admission
Take some time out in this family friendly space, with resources and games for all the family.

Tate Teachers

A programme of continuing professional development for teachers, trainee teachers and teaching assistants. For the full programme visit www.tate.org.uk/schoolsteachers.

Open Door for Teachers

Sat 8 Oct, 13.00-16.00
Free, no booking required
Visit the new exhibition, pick up free Teacher Resources and talk to the Learning Team about possibilities of working with this season's displays. There is also an opportunity to meet representatives from Cornwall Art Education Forum and Newlyn Art Gallery.



Teachers Walk & Talk

Sat 8 Oct, 13.30
Free, no booking required
Join the Learning Curator and an Artist-Educator in a Walk and Talk around the exhibition. Share your thoughts and ideas on ways to engage with this season's displays with formal learning groups at all levels.

First to Know

Fri 25 Nov, 17.00
Free, advance booking essential
An opportunity to look ahead to the next season (18 Jan – 7 May 2012, *Simon Fujiwara*) and consider connections to your lessons, a group visit or your own continuing professional development. Attendees will receive a 50% discount on group activity booked in the Spring season.

First to Know is followed by Late at Tate St Ives with free entry to the galleries from 18.00-21.00 plus food and pay bar in the café until 22.00

Teacher Resource Notes

Free
Click on schools programme at www.tate.org.uk/stives for resource notes on past and present displays.

Group Visits

All groups must be pre-booked. As well as under 18s, community groups and formal education groups from Cornwall enjoy free admission when pre-booked; other pre-booked groups receive discounted admission rates. Save time by completing a booking from online www.tate.org.uk/stives/eventseducation/toursgroups. The following activities are available at Tate St Ives and the Barbara Hepworth Museum and Sculpture Garden.

Talks and Tours

From £1.75 per head (Community groups in Cornwall receive free guided tours)
Engage with gallery staff through a range of discussion-based activity including short intro talks, exhibition tours and focus sessions, all tailored to the needs of your group.

Practitioner-led Activity

From £4.50 per head, includes art materials and resources
Delivered by artists and other creative practitioners, and designed to encourage creative exploration. Activity includes drawing tours and practical workshops adapted to the needs of your group.

Tate St Ives

A Brief history

Shop & Café



Tate Shop

Artists and the landscape are the emphasis of the shop at Tate St Ives, with its wide range of books, gifts, postcards and greetings cards. Exclusive artist-designed gifts include a range of products inspired by St Ives from Elaine Pamphilon, and a selection of books and colourful creative kits by Alice Melvin. We also stock jewellery, our own collectable Tate St Ives mugs and a broad range of children's picture books. Visit www.tate.org.uk/shop or call 01736 796226.

Since the late 1800s, West Cornwall has been a destination for artists from all over the world. With the arrival of Barbara Hepworth, Ben Nicholson and Naum Gabo in 1939, St Ives became internationally known as a centre of modern art. A new generation of artists followed including Wilhelmina Barns-Graham, Patrick Heron, Terry Frost and St Ives-born painter Peter Lanyon.

Tate St Ives, designed by architects David Shalev and Eldred Evans, opened in 1993 to celebrate the modernist legacy of the town's international artist colony. The dynamic spirit of the artists who lived and worked in the town throughout the twentieth century is reflected in a broad programme of historic and contemporary displays that embrace the best of international modern and contemporary art, presenting temporary exhibitions, special commissions and works from the Tate Collection.

Tate Café

With spectacular views over the old town of St Ives and the Atlantic Ocean, there's no better place to stop and unwind. We aim to source all ingredients from Cornish growers and suppliers where possible. From cheese to fish, potatoes to ice cream and cider to wine, we're proud to stock and sell premium Cornish goods.

Tate St Ives Shop and Café are free to visit

Tate for Hire

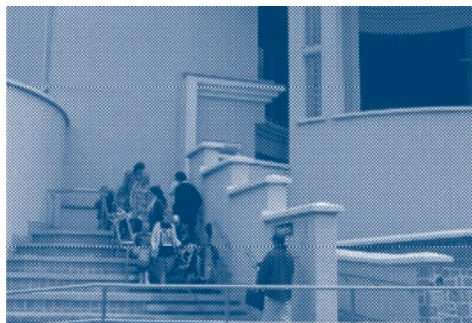
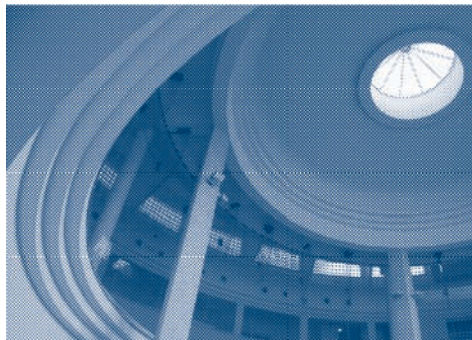
To host a private function at Tate St Ives, please call 01736 796226.



Membership

Funding

Become a Tate St Ives Member and enjoy a special relationship with the gallery. Benefits include unlimited free entry to Tate St Ives and the Barbara Hepworth Museum and Sculpture Garden (with up to three guests), free entry to all four Tate galleries, *TATE ETC* magazine, Tate Guide and invitations to exclusive events and private views. To join simply visit the Members Desk at Tate St Ives or call 01736 796226 / 020 7887 8752. www.tate.org.uk/members



Cover and text section totally chlorine free.

Text section printed on 100% recycled fibre. FSC certified



Although designed to display works from the Tate Collection, Tate St Ives does not own the building and pays rent to the owner, Cornwall Council. Tate St Ives is a non-departmental body and a statutory charity in accordance with the Museums and Galleries Act 1992, funded by the Department of Culture, Media and Sport for 50% of its running costs. The gallery undertakes to raise the remaining costs through admissions, commercial sponsorship, trusts and foundations, donations, membership, the Tate St Ives Print Series, the café and shop, profits from which go directly to fund the exhibitions and events programmes.



Tate St Ives

Porthmeor Beach
St Ives, Cornwall TR26 1TG

**Barbara Hepworth Museum
& Sculpture Garden**

Barnoon Hill
St Ives, Cornwall TR26 1AD

T 01736 796226
E visiting.stives@tate.org.uk
www.tate.org.uk/stives

Follow us on:  

Opening Hours

Mar–Oct Every day 10.00–17.20
Last Admission 17.00
Nov–Feb Tues–Sun 10.00–16.20
Last Admission 16.00
Closed Dec 24, 25, 26
Open Dec 27, Jan 1
Open Mon 2 Jan 12.30–16.30

Future Exhibitions

Simon Fujiwara
18 Jan–7 May 2012

Alex Katz
19 May – 23 Sep 2012

Tate Collection Display
19 May – 23 Sep 2012

Admissions

Tate St Ives
£6.25 / conc. £3.75
Barbara Hepworth Museum
& Sculpture Garden
£5.25 / conc. £3
Combined
£9.75 / conc. £5.25
(Concessionary rates: 60s and
over, students over 18, visitors
with disabilities, unwaged)
Free Admission: Tate Members,
and 18s and under

Advance Group Bookings

Discounted tickets are
available for groups
of 10 or more

Art Pass

£14.50 / conc. £8.50
Purchase an Art Pass for
unlimited access to Tate
St Ives, the Barbara Hepworth
Museum and Sculpture
Garden, the Leach Pottery

and Penlee House Gallery &
Museum for a seven day
period, and a 10% discount
at Newlyn Art Gallery
and the Exchange shops

Facilities

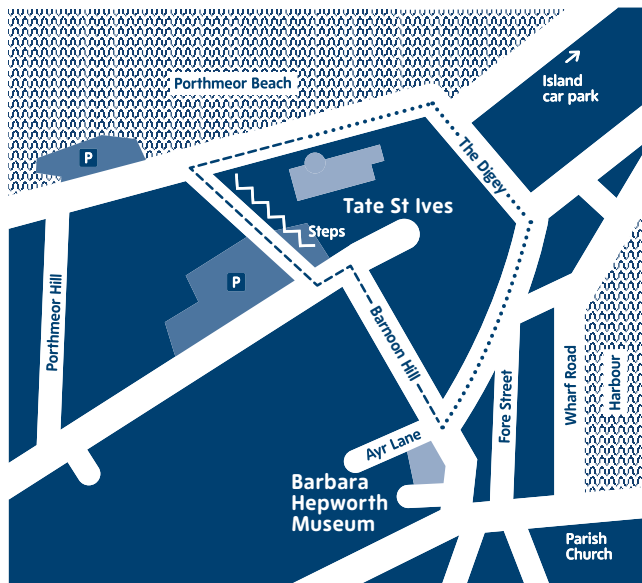
Parent and baby room /
baby changing facilities /
ramped access / adapted toilet /
lift access to all floors

Parking

Parking in St Ives is limited.
All visitors travelling to the
gallery by public transport
receive £1 off admission on
production of a valid ticket.
For further info call 0870608
2608 or visit www.travelinesw.com

Changing Displays

We apologise that the galleries will
be closed from 4–17 Jan 2012 to
re-hang our exhibitions. The shop,
café and Hepworth Museum will
remain open



Local Map

Restricted traffic zone,
pedestrian routes only

Most direct route to
Hepworth Museum (steep)

Alternative route (flat)

