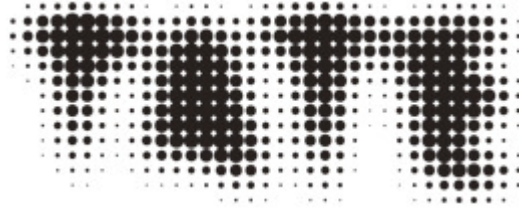


If you are still having problems viewing this message, please [click here](#) for additional help.



EXHIBITIONS EVENTS MEMBERSHIP SHOP

NEXT BRITISH ART NETWORK EVENT

19TH CENTURY LANDSCAPES



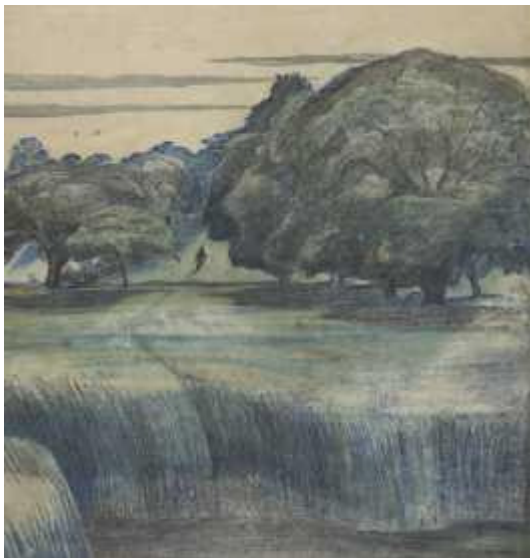
Next British Art Network Seminar: 19th Century Landscapes
Thursday 14 September 11.00-17.00, The Scottish National Gallery

This seminar takes the National Galleries of Scotland's current exhibition *Constable and McTaggart : A Meeting of Two Masterpieces* as the starting point to investigate both artists, and British landscape painting more broadly in the 19th century. The seminar will explore the role of nations and national schools and issues to consider when presenting exhibitions of British art internationally.

Find out more

AROUND THE BRITISH ART NETWORK

This summer be inspired by British Landscapes through these exhibitions and activities taking place around the UK.



LONDON: UNTIL 27 AUGUST

PLACES OF THE MIND

An exhibition of British watercolour landscapes 1850-1950 from The British Museum's Department of Prints and Drawings.

[Find out more](#)



GLASGOW: UNTIL 28 AUGUST

AGAINST LANDSCAPE

Glasgow School of Art and Grizedale Arts present a show of experimental work from landscape and land artists.

[Find out more](#)



SALISBURY: UNTIL 3 SEPT

BRITISH ART: ANCIENT LANDSCAPES

Experience Britain's ancient landscapes at Salisbury Museum by some of the greatest names in British art.

[Find out more](#)



BRIGHTON: UNTIL 8 OCTOBER

CONSTABLE AND BRIGHTON

An exhibition at Brighton Museum and Art Gallery exploring Constable's relationship with the seaside town.

[Find out more](#)



EDINBURGH: UNTIL 25 MARCH

CONSTABLE AND MCTAGGART

A Meeting of Two Masterpieces: This display brings together two giants of landscape painting.

[Find out more](#)



ONLINE RESOURCE

THE BRITISH LIBRARY: PICTURING PLACES

A new free online resource exploring the British Library's extensive holdings of landscape imagery.

[Find out more](#)

The British Art Network is supported using public funding by Arts Council England.

If you have any comments, wish to contribute to the next newsletter or want to update your contact details please contact Fran Laws, Network Coordinator, British Art.

Salisbury Cathedral from the Meadows, exhibited 1831, John Constable (1776 – 1837) © Tate, London 2013 Purchased with assistance from the Heritage Lottery Fund, The Manton Foundation, Art Fund (with a contribution from the Wolfson Foundation) and Tate Members. Aspire is a five-year partnership project between five partner institutions supported by Art Fund, and by National Lottery players through the Heritage Lottery fund.

Paul Nash (1889–1946), The Wanderer, also called Path through trees (detail). Watercolour with blue chalk and graphite, 1911. Presented by the Contemporary Art Society

Lisa Milroy, Constant Daylight, 2005. Oil and acrylic on canvas, 140 x 134.5 cm, courtesy the artist.

Eric Ravilious, The Long Man of Wilmington, 1939 © Victoria and Albert Museum, London.

John Constable, A Windmill near Brighton, 1824, © Tate, London 2016.

William McTaggart, The Storm, 1890. Presented by Mrs Andrew Carnegie 1935, National Galleries of Scotland.

Peter Fabris, The Eruption of Vesuvius, from Supplement to the Campi Phelgraei, 1779, The British Library.

[Tate's full website privacy policy](#)

© Copyright Tate 2017

To ensure our emails reach your inbox add BritishArtNetwork@tate.org.uk to your address book.