

audible silence:
tate modern, sleeping and waking
jez riley french



audible silence:
tate modern, sleeping and waking
jez riley french

buildings sing... their walls, their floors,
chairs and tables are full of sound, of their
own music, made by vibrations, made
even by the world turning.

these pieces feature only untreated
sounds directly recorded with special
microphones and listening devices in
the tate building itself.

movere one:
late afternoon, evening
and towards the night

turbine hall — turbine hall railings —
turbine hall floor — floor 2 vents —
mezzanine railings

movere two:
through the night

ultrasonic signals, turbine hall
stair lighting — ceiling rattles,
unknown tones

movere three:
early morning and towards the day

inside the donation boxes —
floor one railings — morning workers
arriving — opening to the public —
floor (the sound of the world turning)

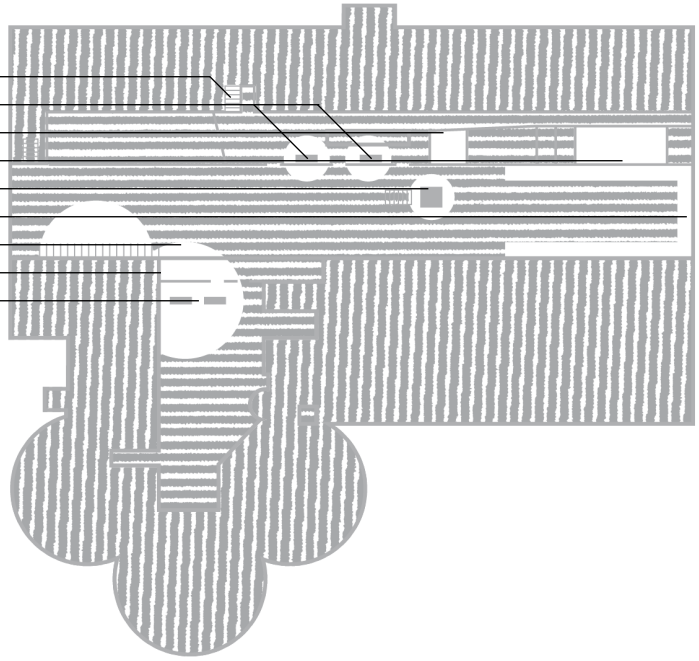
(movere, (“to move”), the movement of
different voices against one another.)

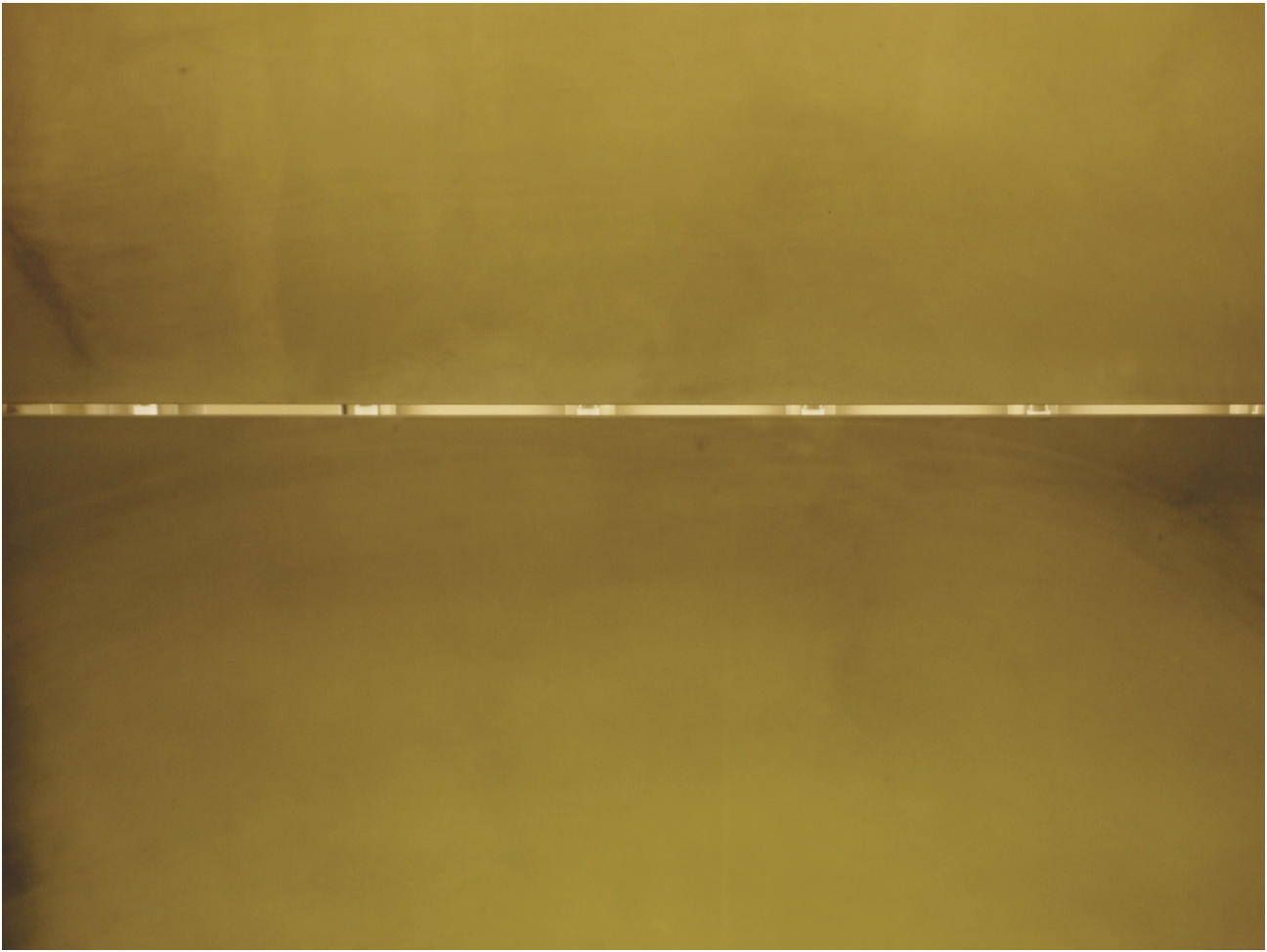
you are welcome to listen while walking
around the building or, if you have time,
find a quiet place to sit and slowly let
the sounds gather around you. (maps
are included between the pages showing
some out of the way places to rest awhile)



level 0
turbine hall
the tanks

- under the stairs
- seating
- welcome room
- schools and families room
- seating
- around turbine hall
- on turbine hall stairs
- alcove
- seating





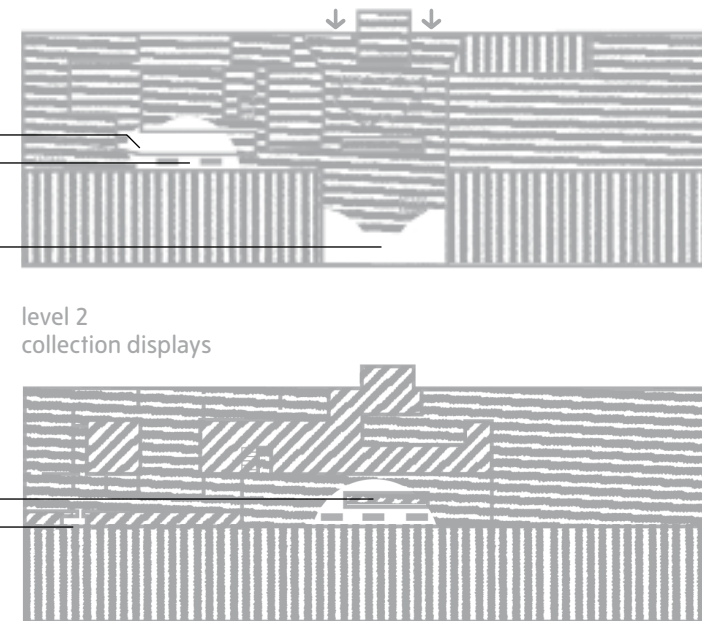
level 1
river entrance

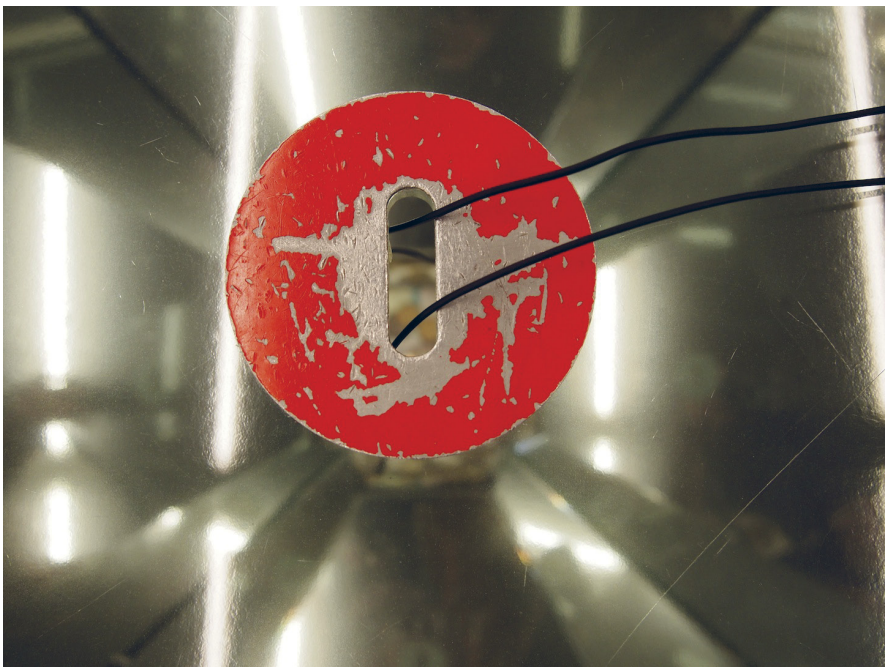
starr auditorium foyer
seating

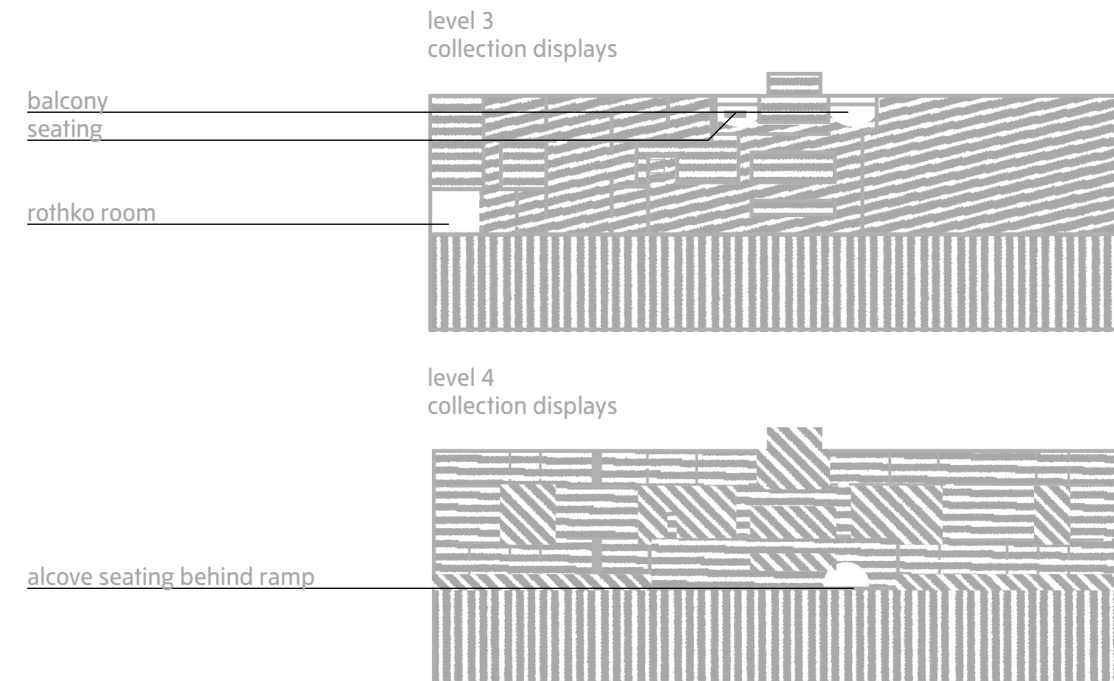
around the edge of the bridge

level 2
collection displays

alcove seating behind ramp
pull back space











recorded 2012 / 2013 using JrF c-series
contact microphones, coil pick ups and
prototype geophone, Sound Devices
7-series recorder, ultrasonic detectors,
sanken and dpa microphones

thanks always to Maureen and Pheobe

jezrileyfrench.co.uk