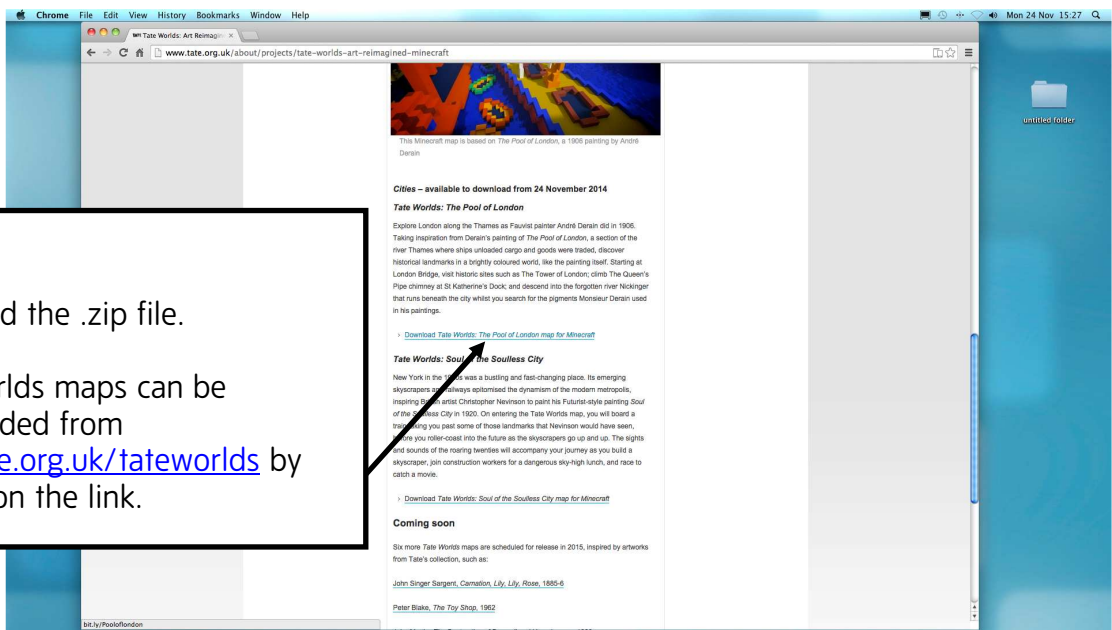
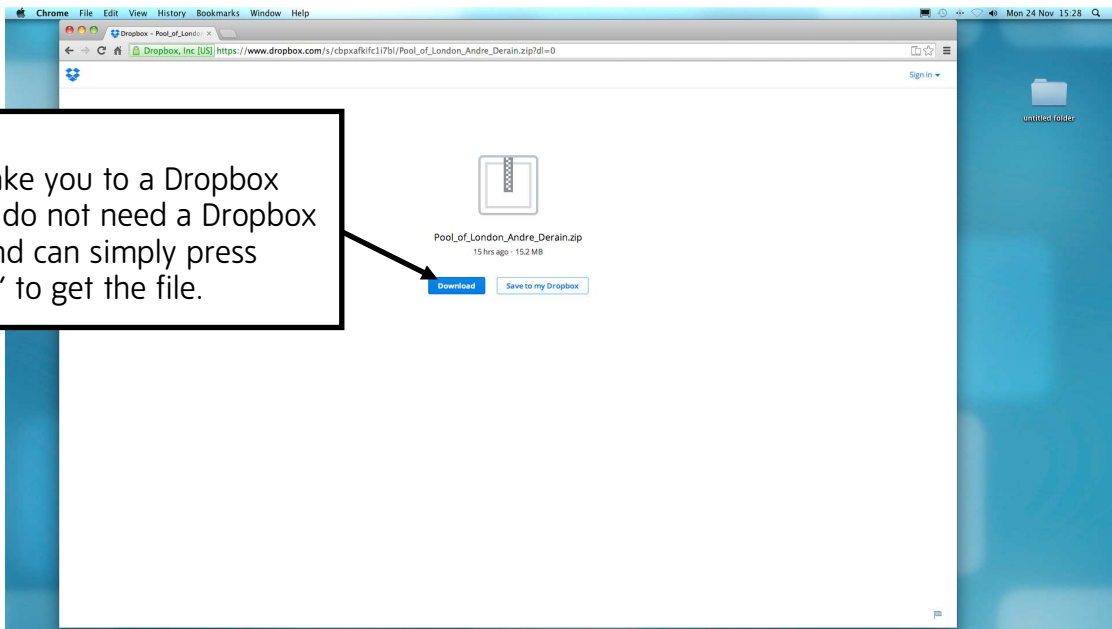


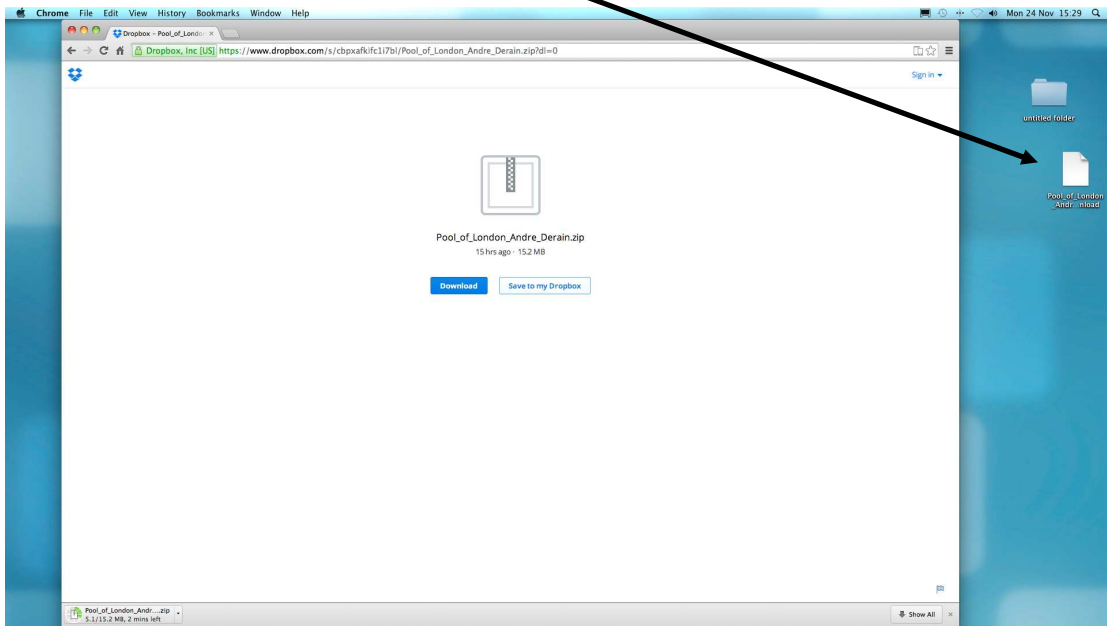
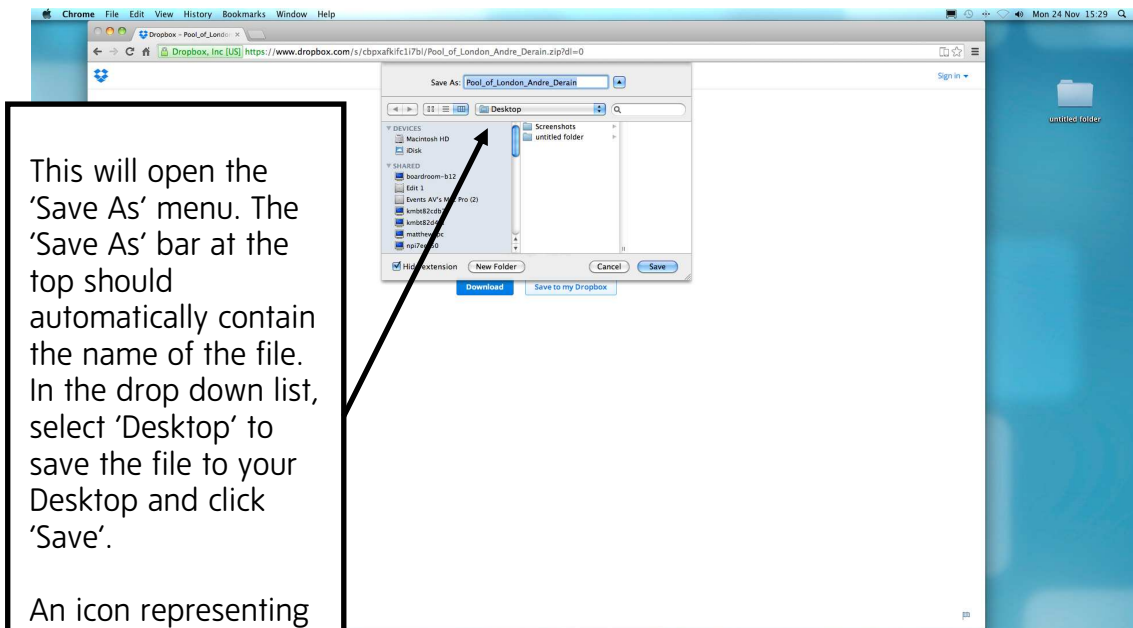
How to download and install a Tate Worlds map in Minecraft (For Mac)

Step 1
Download the .zip file.
Tate Worlds maps can be downloaded from www.tate.org.uk/tateworlds by clicking on the link.

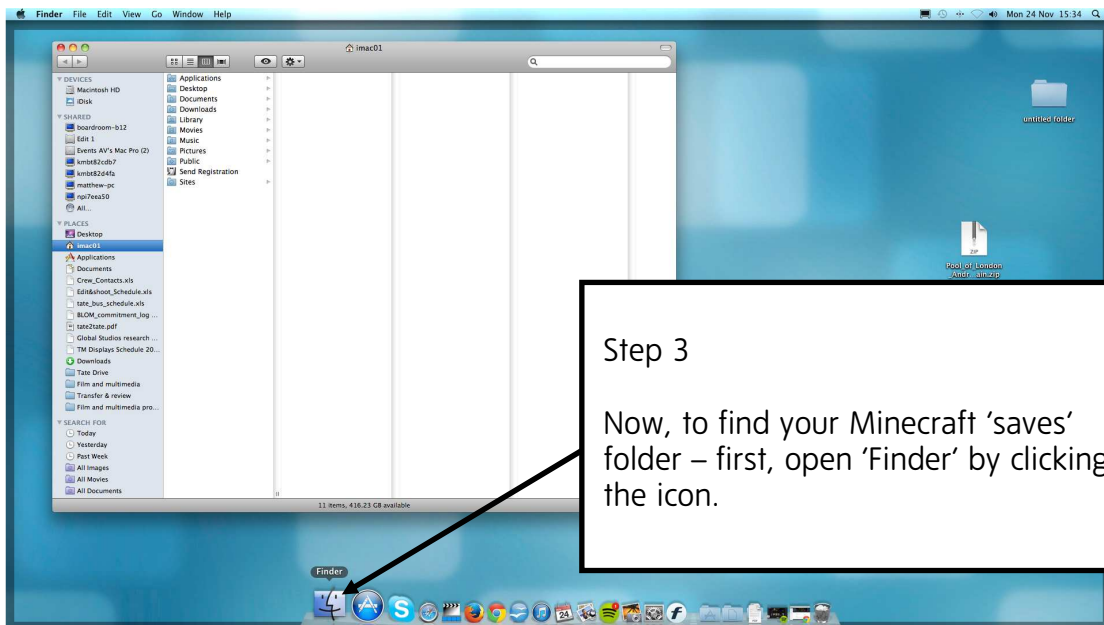
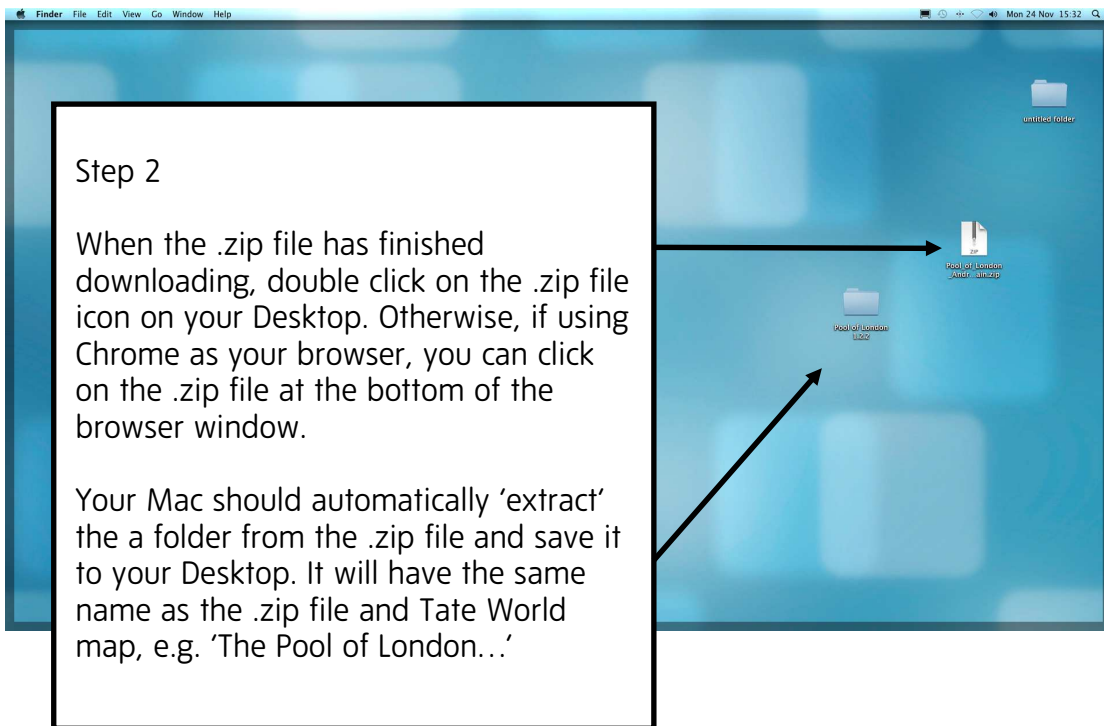


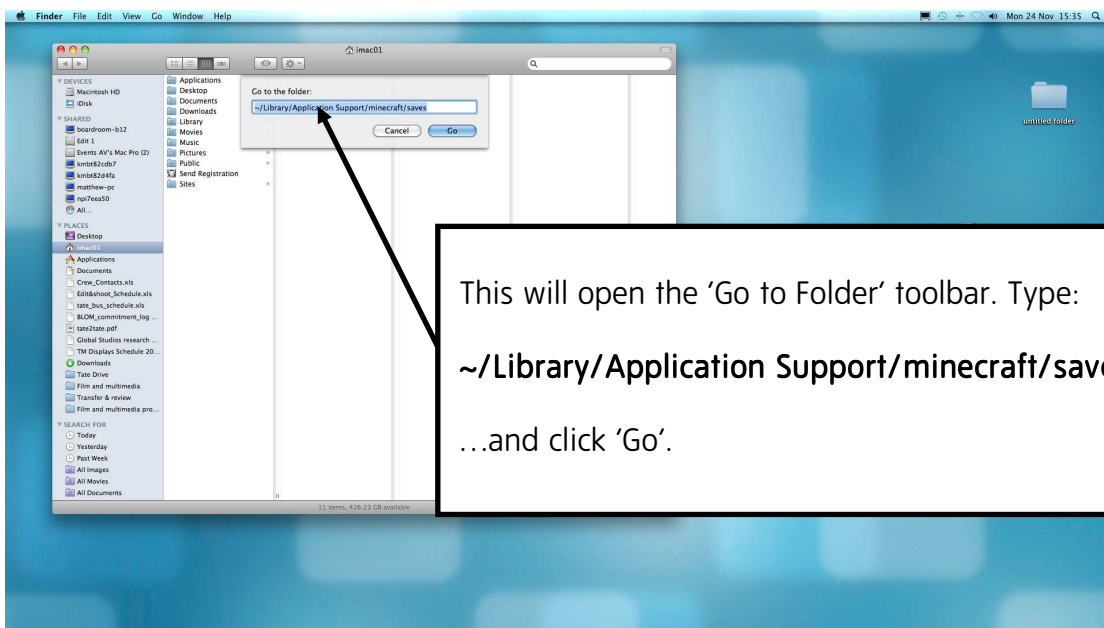
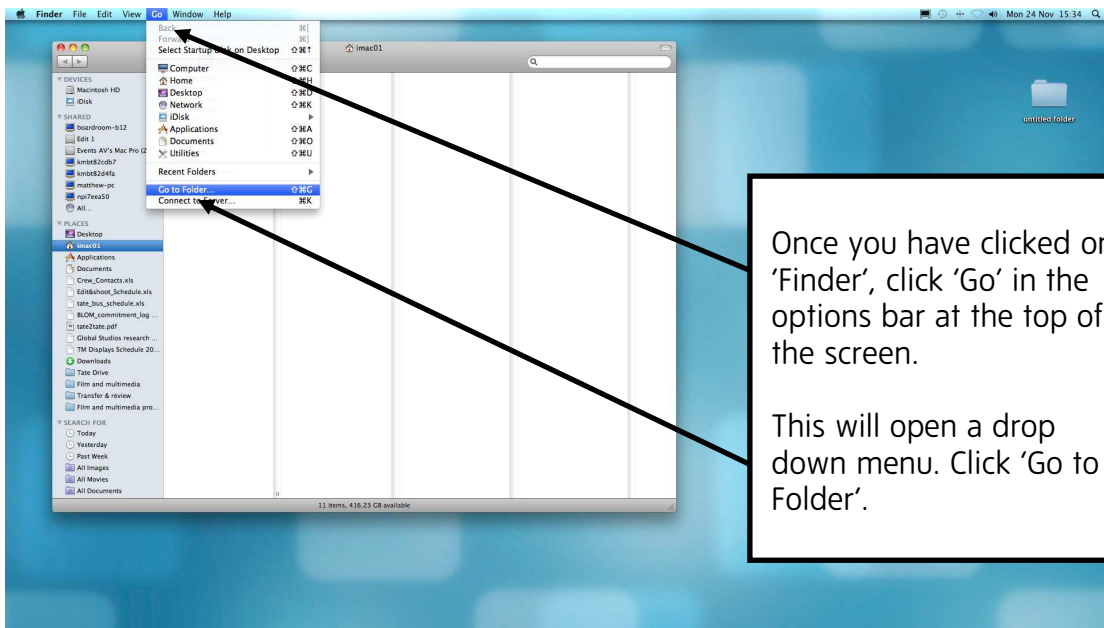
This will take you to a Dropbox page. You do not need a Dropbox account and can simply press 'download' to get the file.



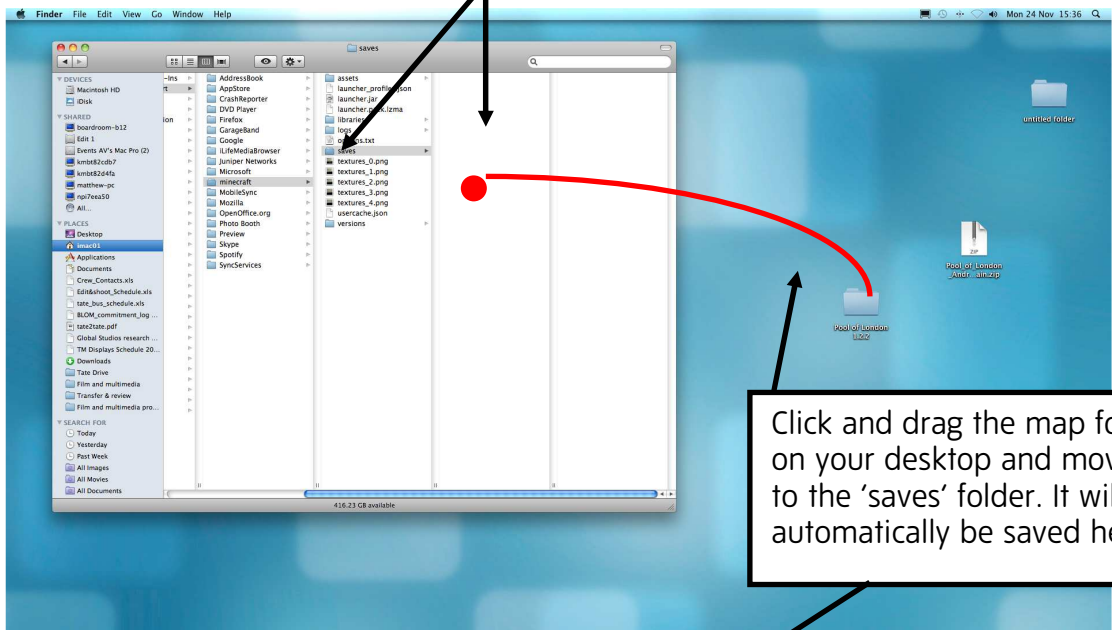


It should start downloading automatically. When using Chrome browser, the .zip file will appear at the bottom of the window as it downloads.

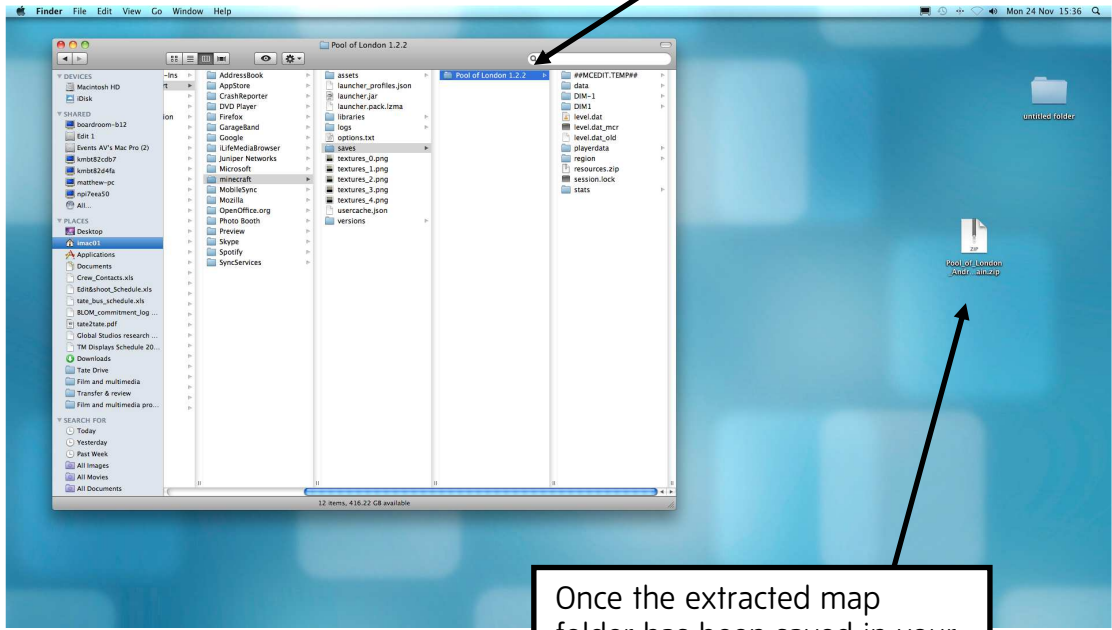




This will open your Minecraft 'saves' folder.

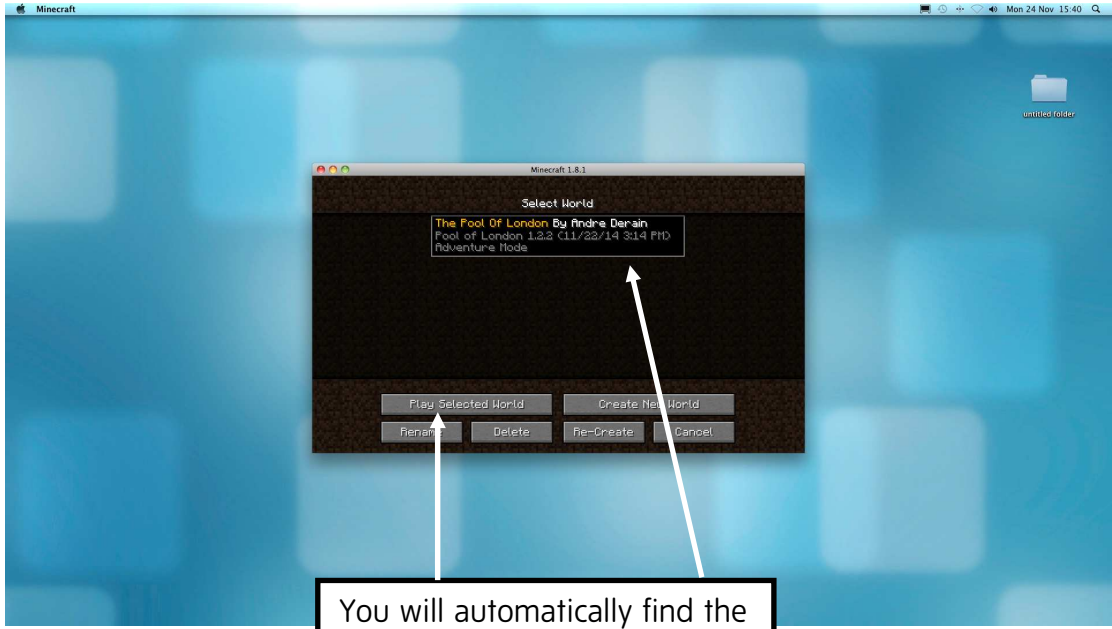
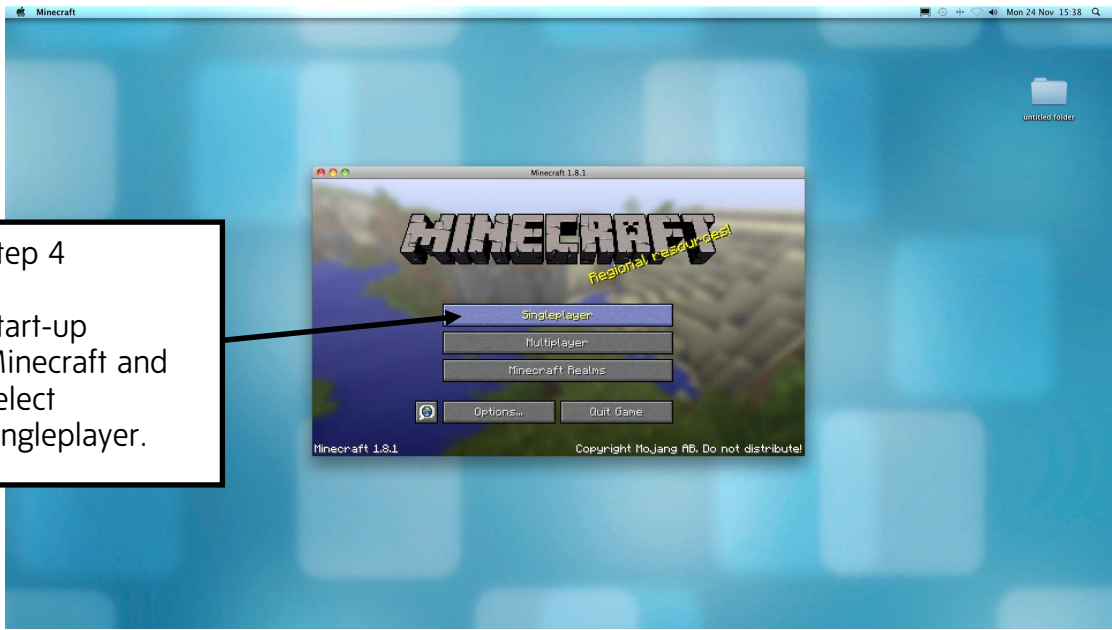


Click and drag the map folder on your desktop and move it to the 'saves' folder. It will automatically be saved here.



Once the extracted map folder has been saved in your Minecraft 'saves' folder, you no longer need the .zip file left on your desktop.

Step 4
Start-up
Minecraft and
select
singleplayer.



You will automatically find the map in your list of 'worlds' to play.

Select the Tate Worlds map by clicking on it, then click 'Play Selected World' to start playing.